

Husqvarna '3' Series Stop Switch Swap

It's always amazed me that Husqvarna would use such a cheap nasty unreliable fiddly switch, the newer ones such as the little XP550 have something quite different. (Incidentally, the 550XPMk2 is far better than the Stihl 026/260/261 – no comparison)

How convert to a 'trimmer' push type (self-return to run).

Easier.

Safer.

Reliable.

Changed both my 395 and 372, similar job with minor differences.



You'll need part number **537 41 90 01 [On-Off Switch – Husqvarna]**, be sure to get genuine and not something from eBay, they usually cost around £15 to £20.

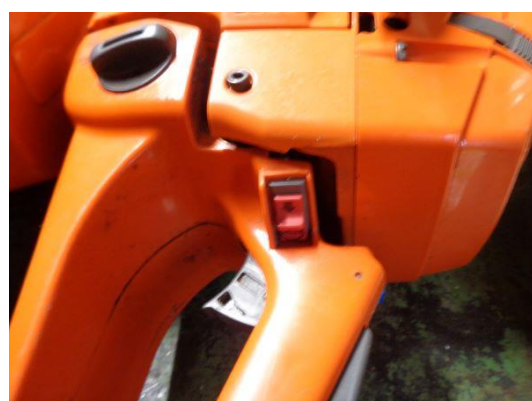
You will also need to solder with the correct size heat shrink and have access to professional crimp Lucar connector and crimp tool or find an old length of wire with the correct terminal ready fitted.

Do not under any circumstances use those red/blue/yellow connector types.

If that's your only choice, forget it – you'll just be adding unreliability - it may not turn the motor off – there's ways of stalling a 395 but I like the switch to work and not short either so's the bloody thing doesn't start.



395XP done



372XP not done

So, the 372, pull the starter / coil cover off disconnect both earth and coil wires, move the s/park plug wire over a little to remove the black shield thing, **be sure to observe and note wire routing**. Not necessary to remove any other plastics on this 372 other than the black shield thing in photo below.

Prise the switch out, do not completely remove the blue coil wire; you'll probably need to tape the earth to it to draw it back through the tiny hole.



That tiny 'bolt' attaching the earth to the body is a small 'TORX' screw.

Compare the switches just to check. I'm certain they'll all be the same – will change over the one in my 1980's 66 (same as 266) in due course.



You will note that one (or both) the terminals are different. Cut the one end off the wire in a suitable place, obviously you now need to lengthen the wire, avoid making it longer as it may rub on other components.



Only use the professional crimp connector as pictured above.

Join the wire carefully and solder, slide the heat shrink over, as in photo below.



Ready to go.

Note the 372 only needed the earth wire to be altered.

Copyright © Mr D 2024

And use a bloody torque wrench you heathens.